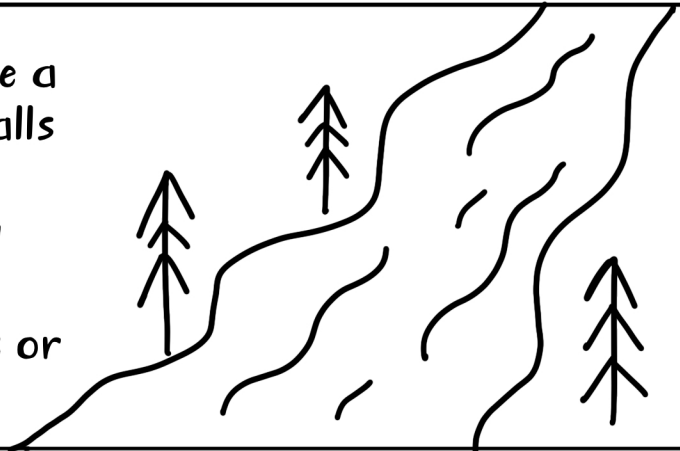


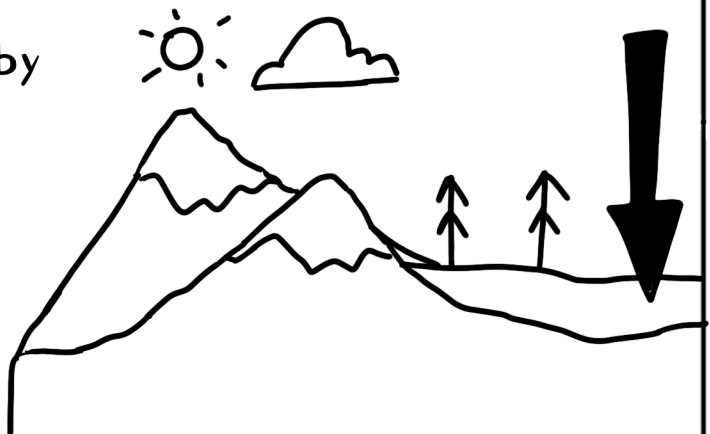
WATERSHED

An area of land that acts like a water collector. When rain falls or snow melts it drains into streams and rivers that flow into lakes, bays, and oceans. This area where water drains or sheds is called a watershed.



BASIN

An area of land surrounded by higher land such as hills or mountains. Basins are landforms shaped like bowls.



PRECIPITATION

Rain, sleet, snow, or hail that falls to the ground.

